



Midland Fertility Services

Recurrent Miscarriage

'Building futures,
transforming lives'

Miscarriage is a more common problem than is generally recognised, as it occurs in about 15% of all pregnancies, and at higher rates in women who are more than 40 years old. Miscarriage or Recurrent Pregnancy Loss (RPL) is usually defined as having three or more spontaneous miscarriages. These miscarriages usually occur before the 12th week of pregnancy. Even after a number of miscarriages, a successful pregnancy remains possible. Special tests may help to identify, treat and prevent future pregnancy losses.

In the last few years some important advances have been made in our understanding of the causes of miscarriage and, with this knowledge, we have been able to develop new tests to help couples whose pregnancies keep failing.

Causes of RPL

Throughout the last decade, significant progress has been made in understanding certain underlying causes of RPL. Although each case may differ, the major causes of RPL are now believed to fall into one or more of the following categories:

- genetic abnormalities
- uterine defects
- hormonal defects
- immune dysfunction
- coagulation factors
- environmental factors

Investigating RPL

MFS treats women who have had recurrent miscarriages whether they have conceived naturally or after assisted conception treatment. If a woman has experienced two or more miscarriages,

an important part of the RPL investigation is to identify the cause (or causes) of the miscarriages.

MFS will start with a thorough medical evaluation of each pregnancy and miscarriage to determine the probable causes.

MFS will also carry out lab tests on the woman's blood – and occasionally on the man's – to help make an accurate diagnosis.

These tests may include:

- chromosomal testing
- immunological testing
- endocrine testing
- metabolic testing
- pro-thrombotic testing

In conjunction with specialist laboratories, MFS offers a complete range of endocrine, metabolic, genetic and immunological tests for determining the underlying causes of RPL. These tests may include:

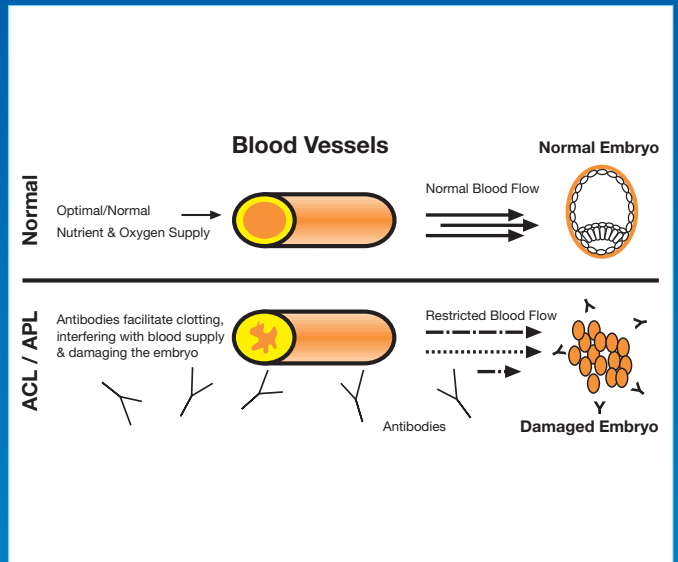
- anti-cardiolipin antibodies
- anti-phospholipid antibodies
- lupus anti-coagulant
- activated partial thromboplastin time
- natural killer cells
- anti-nuclear antibodies
- karyotyping-chromosome analysis

The investigation of RPL will include an initial consultation, appropriate tests and a follow-up consultation. Not all causes of RPL can be cured at present, but some new treatments (especially for RPL associated with clotting abnormalities) are proving very successful. When a pregnancy is achieved, MFS also offers intensive early pregnancy monitoring, which has improved the outcome in women with RPL.

A brief explanation of two more specialised tests for RPL

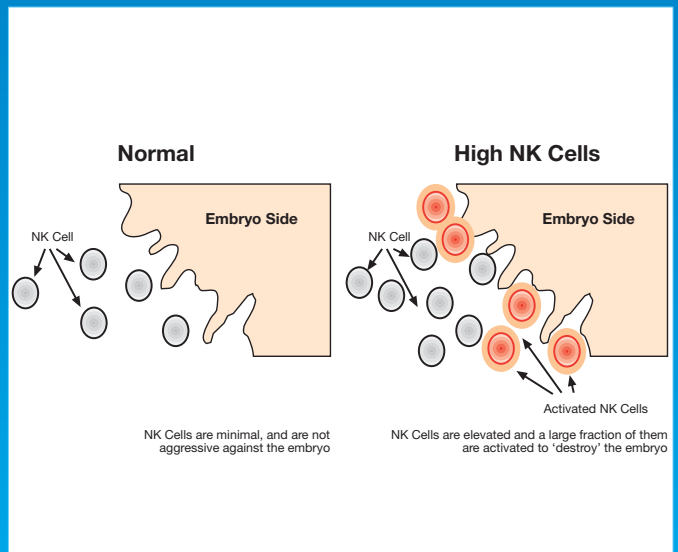
● Anti-Cardiolipin Antibodies & Anti-Phospholipid Antibodies Test

Phospholipids are a mixed group of biological molecules that exist in our blood and in our cell membranes. Some subgroups of this family are involved in important biological functions including the control of clotting and the blood flow between the fetus and the mother. High levels of antibodies to these phospholipids interfere with their normal function by restricting normal blood flow and have been found to be a cause of RPL.



● Natural Killer Cells Test

Natural killer cells (NK) are found in a woman's blood and uterus. Their function is to assist in destroying foreign organisms, such as bacteria, that invade the body. During normal pregnancy, the function of NK cells is suppressed to help protect the fetus from being attacked as a foreign tissue. Increased numbers of NK cells in the blood during pregnancy have, however, been linked to RPL.



List of Services

- In Vitro Fertilisation (IVF)
- Intra Cytoplasmic Sperm Injection (ICSI)
- Surgical Sperm Recovery (PESA/TESA)
- Embryo Freezing
- Blastocyst Culture
- Intra Uterine Insemination (IUI)
- Sperm Storage
- Assisted Hatching
- Egg Freezing
- Egg Donation
- Egg Sharing
- Tubal Patency Testing
- Fertility Investigation Package
- Phospholipid Auto-antibody Screen
- Sperm Analysis
- Recurrent Miscarriage Investigations
- Genetic Screening
- Ovarian Reserve Testing
- Vasectomy Reversal Back-Up

How to get to Midland Fertility Services

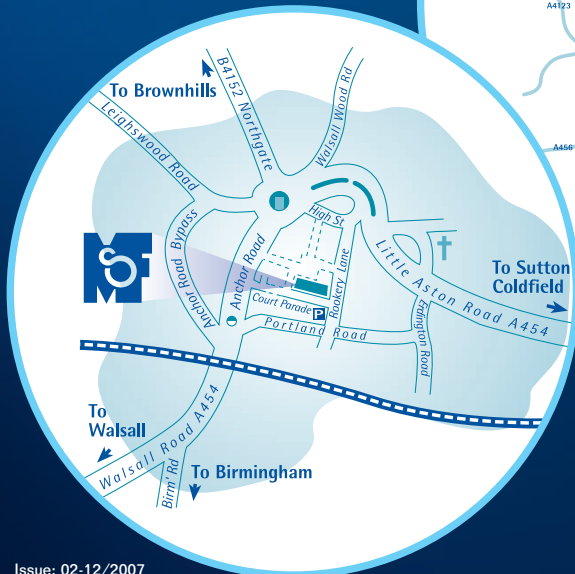
Third Floor, Centre House,
Court Parade, Aldridge,
West Midlands WS9 8LT

t: 01922 455911

f: 01922 459020

e: mfs@midlandfertility.com

w: www.midlandfertility.com



INVESTOR IN PEOPLE



FS 85979

